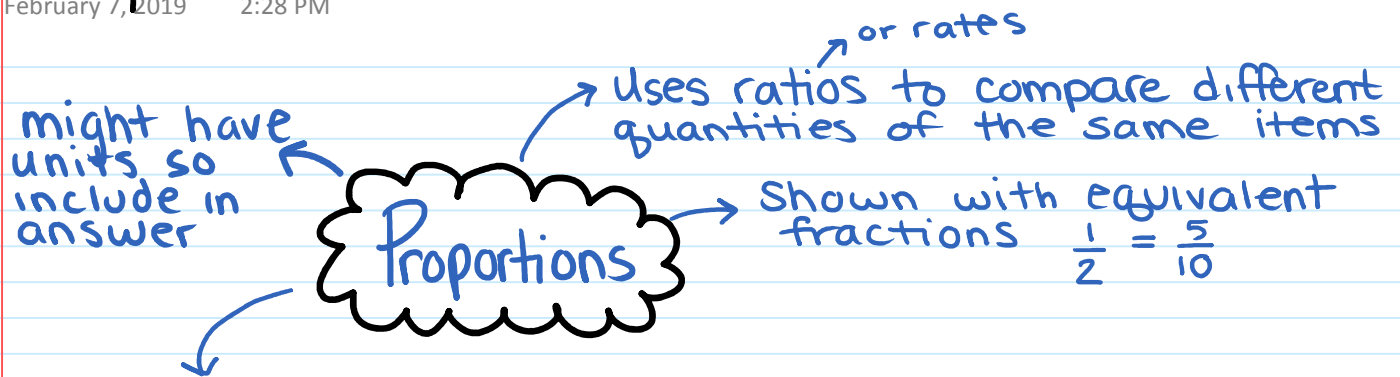


Proportions and Rates

February 7, 2019 2:28 PM



We can solve for an unknown value by using the method: **Cross Multiply, then Divide**

$$\frac{3}{5} = \frac{?}{20}$$

$$20 \times 3 = 60$$
$$\div 5$$

? = 12

- ① identify unknown, start with the VALUE on the same fraction. $\frac{20}{20}$
- ② multiply value to the number across the equal sign and level (top/bot) of fraction.
- ③ Divide Product of ② by unused number.

1. Show steps. Find unknown.

a) $\frac{\$1.95}{3 \text{ buns}} = \frac{?}{25 \text{ buns}}$

? \$16.25 for 25 buns

$$25 \times 1.95 = 48.75 \div 3$$

b) $\frac{9.8 \text{ L}}{100 \text{ km}} = \frac{96.53 \text{ L}}{?}$

96.53 L in 985 km

$$96.53 \times 100 = 9653 \div 9.8$$