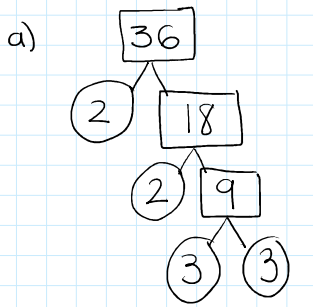


# Perfect Squares

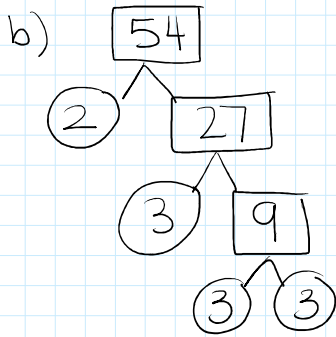
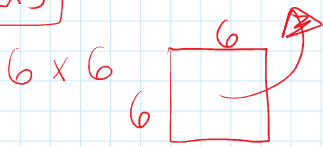
December 7, 2016 1:21 PM

1. Use Prime Factorization and write a factoring statement:



$$2 \times 2 \times 3 \times 3 = 36$$

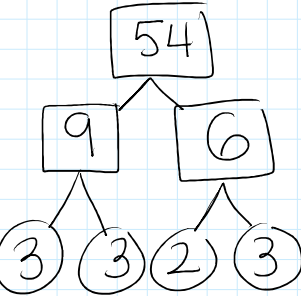
$$2 \times 3$$



$$2 \times 3 \times 3 \times 3 = 54$$

Cannot make 2 equal groups (NO)

$$2 \times 3$$



$$2 \times 3 \times 3 \times 3 = 54$$

2. No calculator: Find approximate square roots of:

a)  $\sqrt{34}$

This is the area.  
The ans is the  
side length of a  
square.

$\sqrt{25}$  5       $\sqrt{36}$  6

→ 5.1 5.2 5.3 5.4 5.5 5.6 5.7 5.8 5.9 ←  
check: 5.83

b)  $\sqrt{83}$

$\sqrt{81}$  9       $\sqrt{100}$  10  
9.1

check: 9.11

c)  $\sqrt{130}$

11      12

11.4