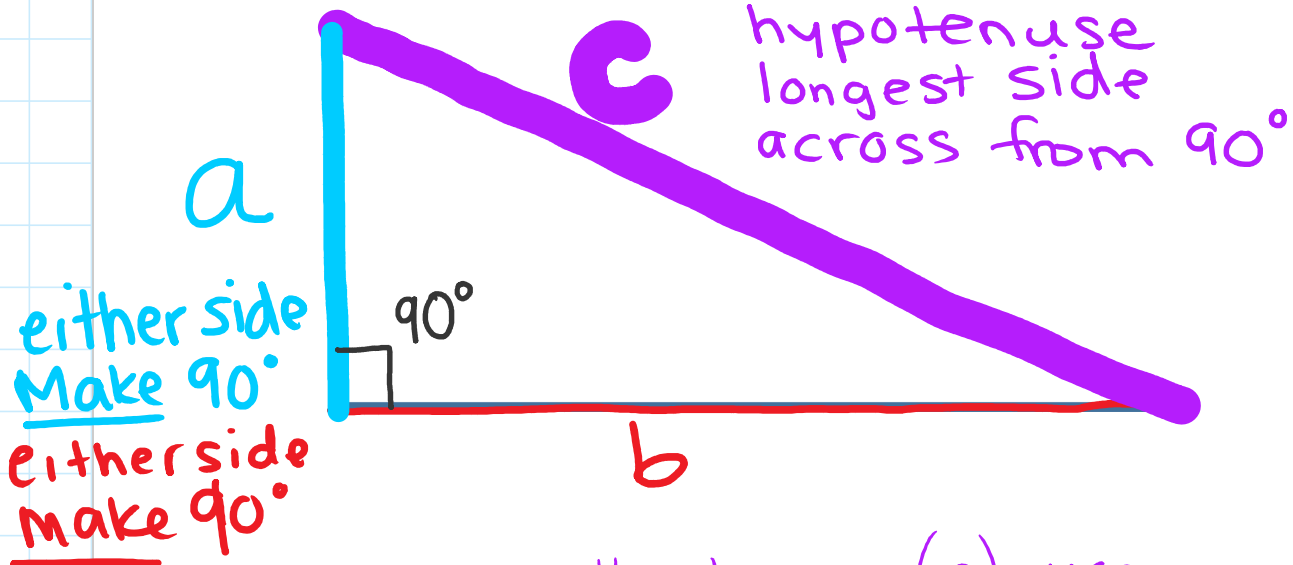
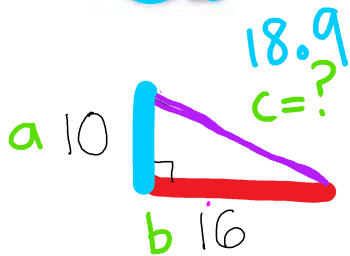


# Right Angle Triangle



When you want to find the Hypotenuse (c), use

$$a^2 + b^2 = c^2$$



$$10^2 + 16^2 = c^2$$

$$100 + 256 = c^2$$

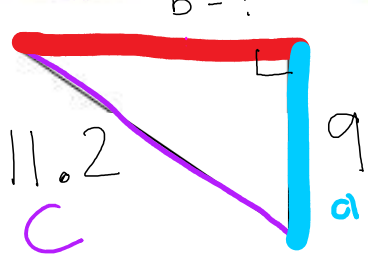
$$\sqrt{356} = \sqrt{c^2}$$

$$18.9 = c$$

square root  
to side  
length

When you want to find either a or b

$$c^2 - a^2 = b^2$$



$$11.2^2 - 9^2 = b^2$$

$$125.44 - 81 = b^2$$

$$\sqrt{44.44} = \sqrt{b^2}$$

$$6.7 = b$$

sqrt  
for side  
length



$$6 \cdot 7 = b$$

för side  
length