

C1 Worksheet#2 (section 3.4)

Ms. Stromgren
Math 8

1. What is the general equation for the Pythagorean Theorem?

13

2. How can you identify the hypotenuse? Give at least 2 ways.

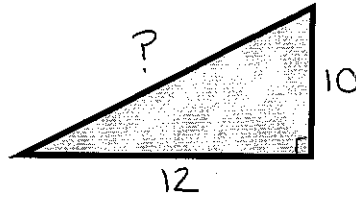
3. Jessie calculated the missing side length as shown below. If she is correct, explain why. If she is not correct, then fix her work.

$$12^2 + 10^2 = c^2$$

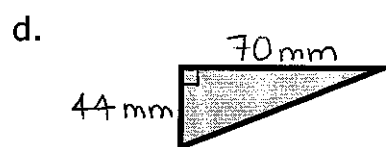
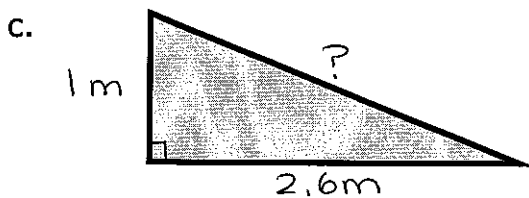
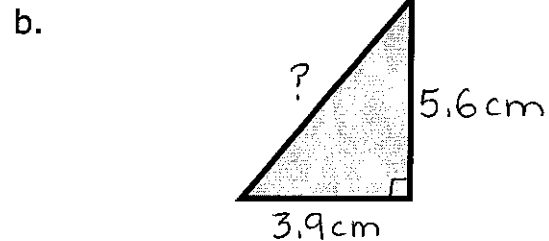
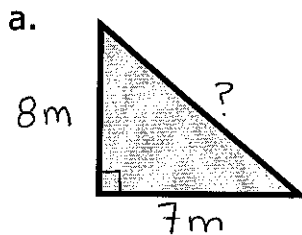
$$24 + 20 = c^2$$

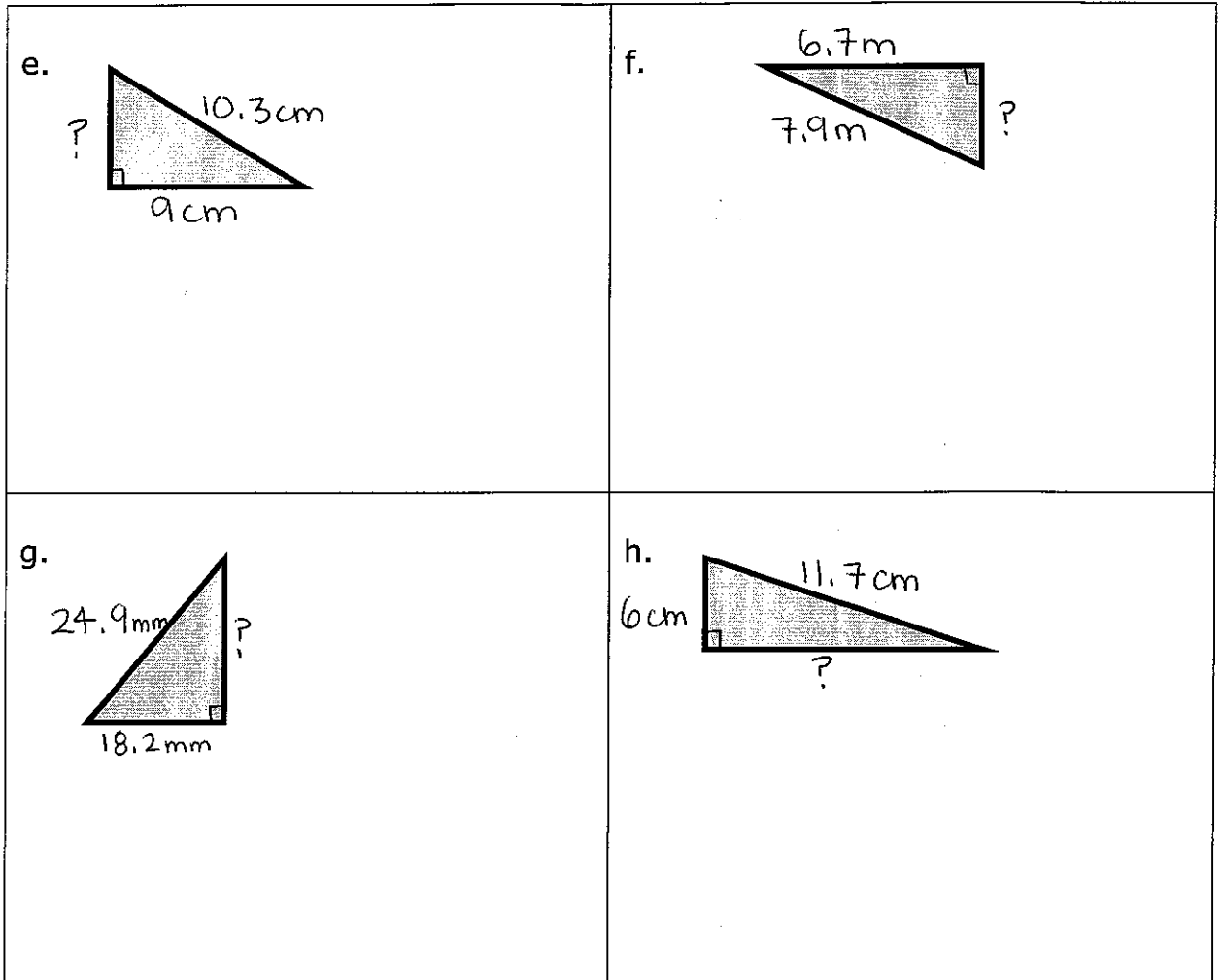
$$\sqrt{44} = \sqrt{c^2}$$

$$6.6 = c$$



4. Determine the missing side lengths to the nearest TENTH:





5. The side view of a ramp into the movie theatre is shown below. You need to cover the ramp with no-slip grip. If it costs $\$13.85/m$, how much will it cost to cover the length of the ramp? (the width of the roll is equal to the width of the ramp) 2 marks

